

ALLEN BOWDEN SCHOOL

Athletic Event Information

2023-2024 7049 Frankoma Rd.

Tulsa, OK 74131

918-224-4440

Welcome to Allen Bowden School. Below you will find information regarding your community's visit to our athletic facilities. Please distribute this information to your team and personnel, along with any community members who may be entering our campus. In the current health climate, there are a number of unique challenges for schools to address as visitors come on campus.

We hope you find the information below helpful for your visit to Allen Bowden. If you have further questions please contact Athletic Director Bobby Brummett at bbrummett@allenbowden.org
918-261-7396

AED / CPR SHIELD Location: Located inside the gym by the Coaches office, NE Corner.

Emergency Numbers for Police, Fire, EMT: 911

Closest Hospitals: St. John, Sapulpa, 1004 E. Bryan, Sapulpa, OK
St. Francis, Tulsa 6161 S. Yale, Tulsa OK

Campus Administrators: Bill Adams, Mobile Number 918-521-1007

AD: Bobby Brummett Contact Information:
Athletic Director: Bobby Brummett Mobile Number 918-261-7396

Protocols for Allen Bowden School In an effort to meet current recommendations for safety from COVID-19, the following protocols are in place.

For Visiting Teams/Personnel

- If you have known exposure to COVID-19 in the past 14 days or been asked to

quarantine in the past 10 days, you may not enter the school facility. Do not enter school facilities if you are experiencing any of the following symptoms: Temperature over 100, persistent cough, shortness of breath, sore throat, headache, muscle/joint pain, nausea or loss of smell/taste.

- Locker room facilities will be available for visiting teams.
- Water bottles will not be provided by Allen Bowden Schools. Visiting teams are welcome

to bring their own towels and water bottles which can be filled on site. No towels or water bottles should be shared among athletes and staff. We recommend no handshake before or after the competition to reduce the amount of contact. Patrons should sit only in designated areas and make every attempt to maintain 6-foot social distance from those who are not members of their family.

- If you have known exposure to COVID-19 in the past 14 days or been asked to

quarantine in the past 10 days, you may not enter the school facility. Do not enter school facilities if you are experiencing any of the following symptoms: Temperature over 100, persistent cough, shortness of breath, sore throat, headache, muscle/joint pain, nausea or loss of smell/taste.

No unauthorized personnel are allowed on the playing surface.

- Upon conclusion of all athletic events, please do not loiter or gather in large groups.

Inclement Weather: In the event of a lightning delay (lightning within 10 miles), an announcement will be made advising patrons to seek shelter in their vehicles. Teams will be advised to return to their locker rooms and await further instruction.

EMERGENCY ACTION PLAN (EAP) LIFE THREATENING INJURY:

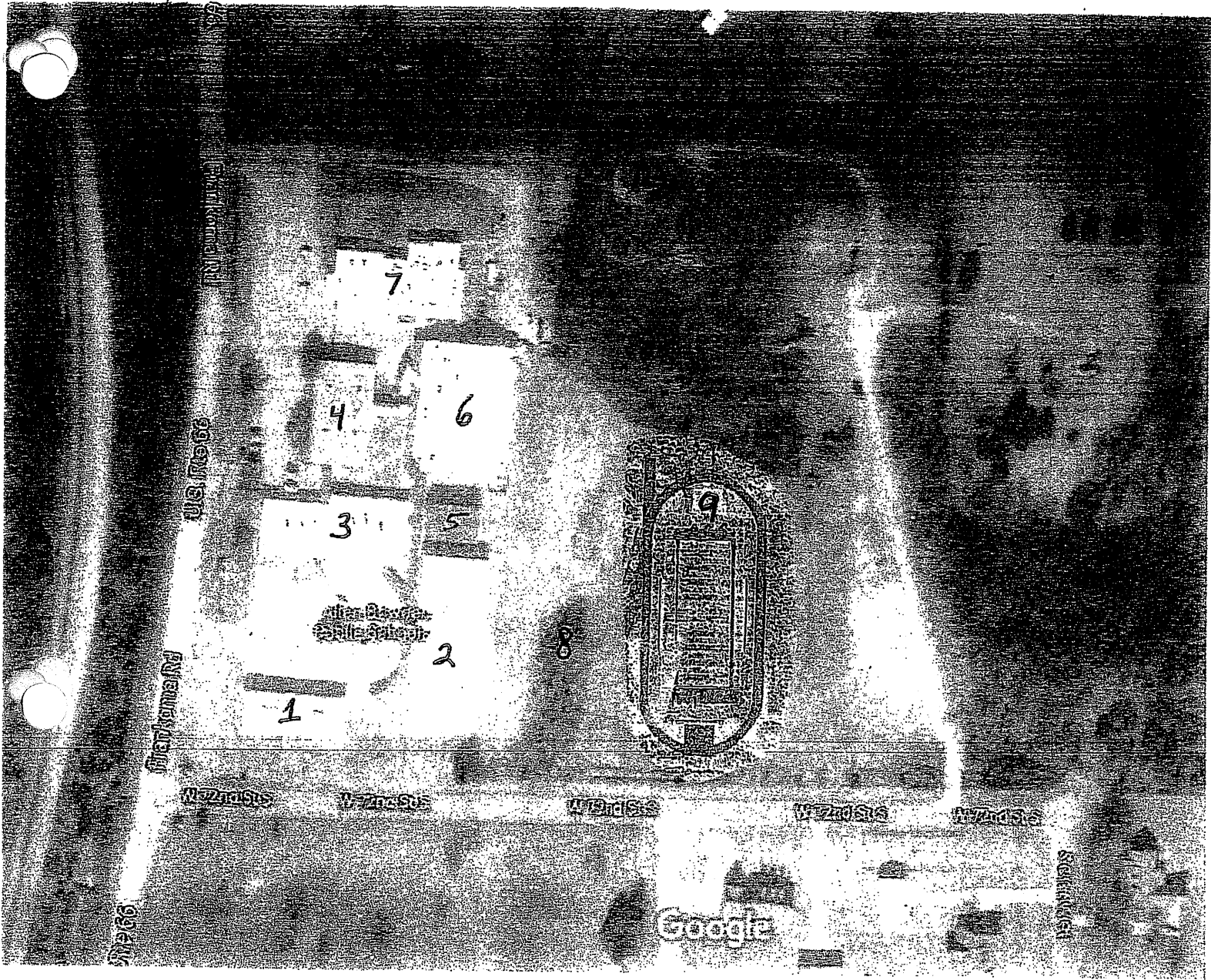
1. Activate EAP if the following occur: ANY LOSS OF CONSCIOUSNESS POSSIBLE SPINE INJURY. OPEN FRACTURE, CLOSED FRACTURE DIFFICULTY OR ABSENT BREATHING OR PULSE UNCERTAINTY IF YOU HAVE A MEDICAL EMERGENCY.
2. Coach will administer appropriate care to the injured athlete until EMS

arrives Coach will contact an administrator who will contact EMS if not already contacted. Parent(s) / Guardian(s) will communicate with the coach, or administrator, and accompany the athlete in an ambulance. If a parent or guardian is not present at the site, a school personnel will accompany the athlete.

NON-LIFE THREATENING INJURY: Coach will administer appropriate care until the parent/guardian arrives. parent/guardian will be given instructions to the nearest healthcare facility.. If the parent/guardian cannot be reached, EMS will be contacted.

ALLEN BOWDEN SCHOOL: 7049 FRANKOMA RD TULSA, OK 74131

BUS BARN EARLY CHILDHOOD CENTER JR. HIGH MIDDLE SCHOOL MEDIA CENTER /
SAFE ROOM GYM / CAFETERIA ADMINISTRATION VISITOR BUS PARKING FOR
FOOTBALL FOOTBALL FIELD



Imagery ©2021 Maxar Technologies, USDA Farm

- 1 BUS BARN
- 2 EARLY CHILDHOOD CENTER
- 3 JR. HIGH
- 4 MIDDLE SCHOOL
- 5 MEDIA CENTER / SAFE ROOM
- 6 GYM / CAFETERIA
- 7 ADMINISTRATION
- 8 VISITOR BUS PARKING FOR FOOTBALL
- 9 FOOTBALL FIELD